

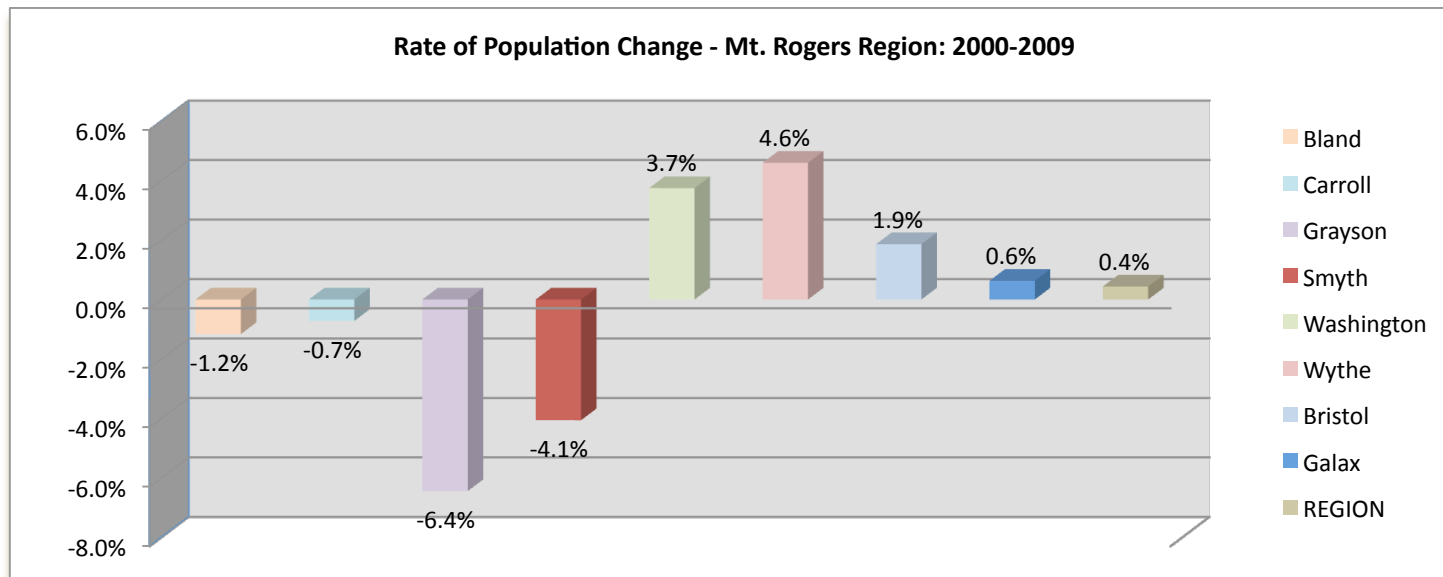
# Mount Rogers Planning District Commission

Regional Economic Indicators - July 2010

## POPULATION

Source: U.S. Census Bureau (2000 figures from Decennial Census; 2001-2009 Population Estimates Program)

Locality	2000	2001	2002	2003	2004	2005	2006	2007	2008	2009	Change 2000-09
Bland	6,871	6,884	6,826	6,870	6,853	6,794	6,742	6,822	6,811	6,791	-1.2%
Carroll	29,245	29,284	29,221	29,149	29,236	29,103	29,221	29,165	29,164	29,034	-0.7%
Grayson	16,881	16,629	16,638	16,478	16,364	16,207	16,149	16,128	16,003	15,793	-6.4%
Smyth	33,081	32,882	32,731	32,533	32,297	32,179	32,218	31,988	31,857	31,738	-4.1%
Washington	51,103	51,204	51,259	51,291	51,561	51,920	52,088	52,783	52,927	53,018	3.7%
Wythe	27,599	27,553	27,633	27,726	27,771	28,113	28,345	28,514	28,743	28,868	4.6%
Bristol	17,367	17,356	17,101	17,433	17,479	17,425	17,571	17,429	17,516	17,690	1.9%
Galax	6,837	6,706	6,668	6,669	6,714	6,737	6,796	6,796	6,823	6,880	0.6%
REGION	188,984	188,498	188,077	188,149	188,275	188,478	189,130	189,625	189,844	189,812	0.4%

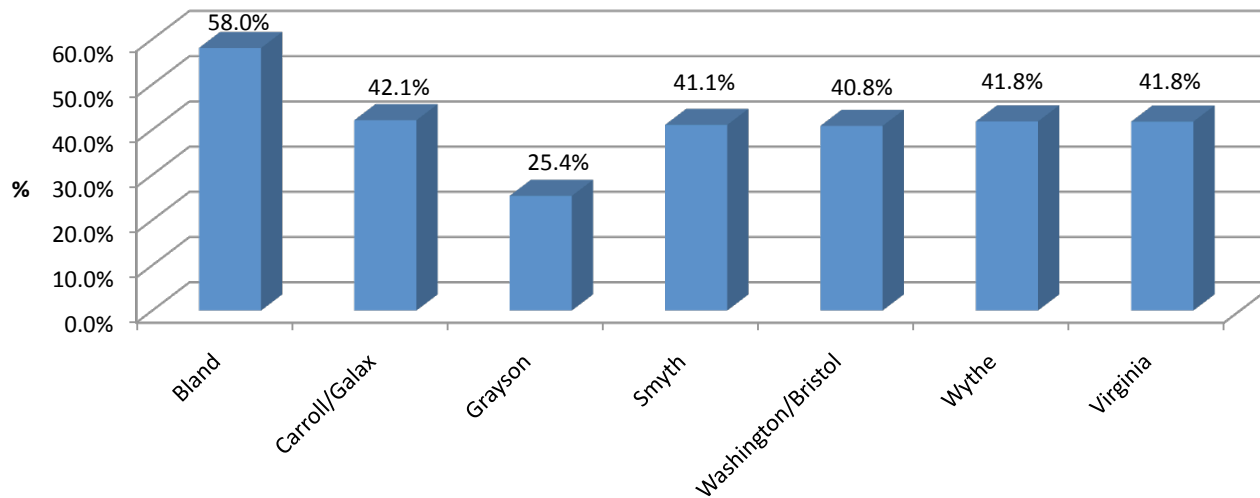


## PER CAPITA PERSONAL INCOME

Source: Bureau of Economic Analysis, U.S. Department of Commerce

Locality	2000	2001	2002	2003	2004	2005	2006	2007	2008	% Change 2000-08	% of State Average
Bland	\$17,721	\$19,113	\$19,667	\$19,759	\$20,815	\$22,200	\$23,837	\$26,684	\$28,008	58.0%	63.5%
Carroll/Galax	\$19,999	\$20,779	\$21,194	\$21,820	\$22,781	\$23,853	\$24,310	\$27,066	\$28,415	42.1%	64.5%
Grayson	\$18,769	\$19,688	\$20,106	\$20,414	\$21,307	\$21,970	\$22,086	\$22,988	\$23,528	25.4%	53.4%
Smyth	\$19,722	\$20,679	\$21,006	\$21,703	\$23,113	\$24,012	\$24,827	\$26,618	\$27,818	41.1%	63.1%
Washington/Bristol	\$23,044	\$23,960	\$24,344	\$25,529	\$26,483	\$27,127	\$28,587	\$30,895	\$32,454	40.8%	73.6%
Wythe	\$20,229	\$20,542	\$21,033	\$21,778	\$22,925	\$24,187	\$25,606	\$27,697	\$28,687	41.8%	64.8%
Virginia	\$31,087	\$32,505	\$33,013	\$34,014	\$36,160	\$37,503	\$39,540	\$43,158	\$44,075	41.8%	

**% Change in Per Capita Personal Income - Mt. Rogers Region: 2000-2008**

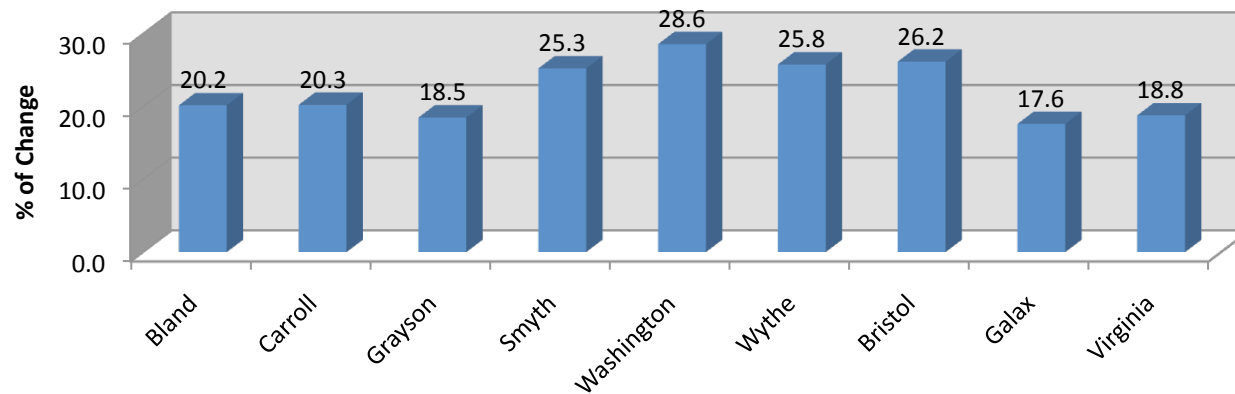


## MEDIAN ADJUSTED GROSS INCOME for Married Couples

Source: Weldon Cooper Center for Public Service

Locality	2000	2001	2002	2003	2004	2005	2006	2007	% Change 2000-2007	% of State Average
Bland	\$38,066	\$38,605	\$38,951	\$37,065	\$39,910	\$43,398	\$44,346	\$45,752	20.2	63.0%
Carroll	\$33,523	\$32,945	\$33,131	\$33,559	\$35,478	\$38,299	\$39,934	\$40,314	20.3	55.5%
Grayson	\$31,413	\$31,193	\$30,781	\$30,979	\$31,819	\$34,912	\$36,541	\$37,228	18.5	51.3%
Smyth	\$33,333	\$33,223	\$33,738	\$33,781	\$36,305	\$40,053	\$41,217	\$41,754	25.3	57.5%
Washington	\$36,725	\$37,441	\$37,962	\$38,004	\$39,919	\$44,410	\$46,061	\$47,232	28.6	65.0%
Wythe	\$36,470	\$36,161	\$36,356	\$37,643	\$40,078	\$43,001	\$45,609	\$45,885	25.8	63.2%
Bristol	\$36,668	\$37,566	\$37,480	\$37,283	\$39,145	\$43,369	\$45,364	\$46,275	26.2	63.7%
Galax	\$35,266	\$34,886	\$34,762	\$34,817	\$35,000	\$39,797	\$41,893	\$41,484	17.6	57.1%
Virginia	\$56,530	\$57,619	\$57,924	\$59,250	\$62,109	\$67,160	\$70,335	\$72,637	18.8	

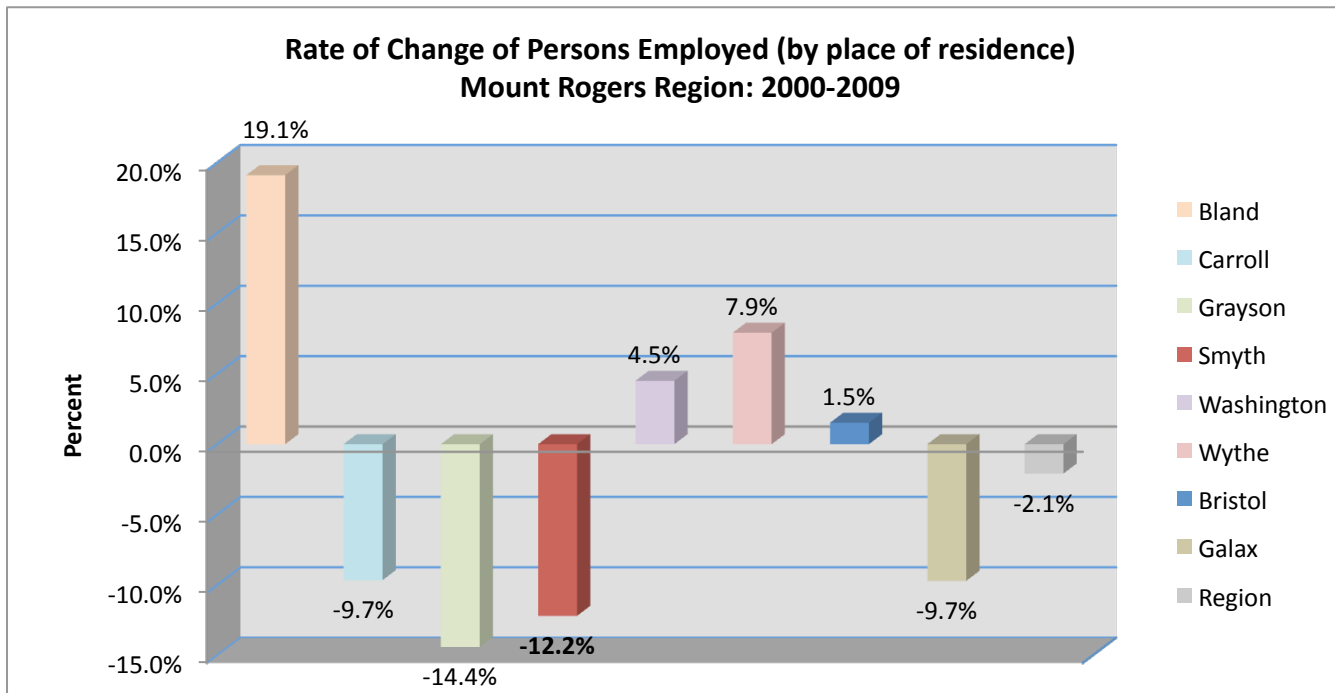
Change in Median AGI for Married Couples - Mt. Rogers Region: 2000-2007



## EMPLOYMENT CHANGE 2000 - 2009 (By Place of Residence)

Source: Virginia Employment Commission (LAUS data - Bureau of Labor Statistics)

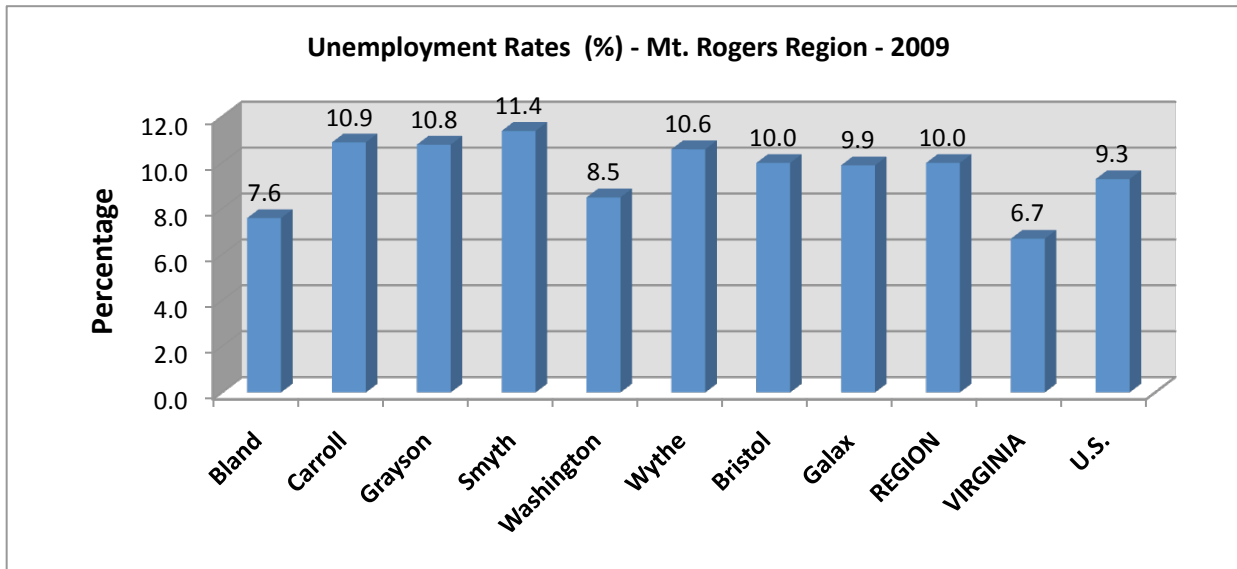
Locality	2000	2001	2002	2003	2004	2005	2006	2007	2008	2009	Rate of Change 2000-2009
Bland	2,763	2,864	2,871	2,907	2,864	2,968	3,128	3,282	3,328	3,291	19.1%
Carroll	14,134	13,749	13,874	14,210	13,977	13,715	13,213	13,214	13,117	12,768	-9.7%
Grayson	7,634	7,308	7,402	7,510	7,293	7,127	6,770	6,808	6,703	6,534	-14.4%
Smyth	15,084	14,513	14,297	14,770	14,823	15,020	14,750	14,350	14,200	13,244	-12.2%
Washington	24,100	24,147	24,478	24,895	24,759	25,022	25,503	25,715	26,146	25,185	4.5%
Wythe	13,468	13,289	13,502	14,135	14,025	14,464	14,494	14,894	15,304	14,534	7.9%
Bristol	7,231	7,240	7,232	7,448	7,359	7,390	7,617	7,613	7,621	7,341	1.5%
Galax	3,171	2,982	3,021	3,096	3,012	2,981	2,874	2,970	2,937	2,863	-9.7%
Region	87,585	86,092	86,677	88,971	88,112	88,687	88,349	88,846	89,356	85,760	-2.1%



# UNEMPLOYMENT RATES (%)

Source: Virginia Employment Commission, LAUS Unit and Bureau of Labor Statistics  
(Annual Not Seasonally Adjusted)

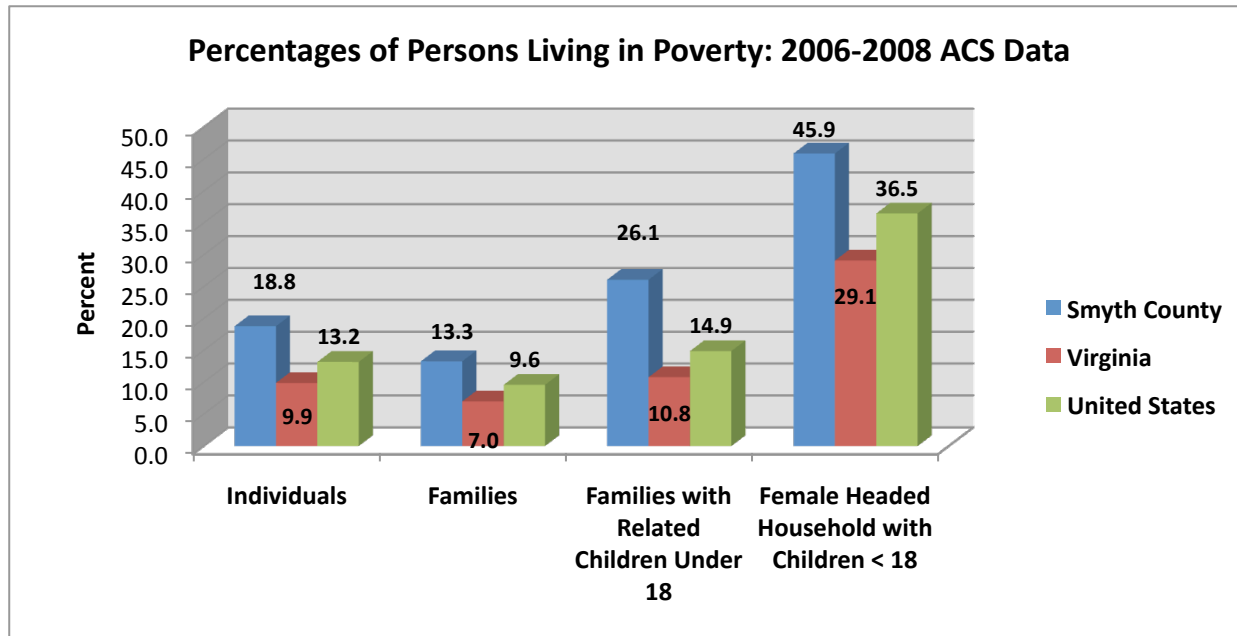
Locality	2000	2001	2002	2003	2004	2005	2006	2007	2008	2009
Bland	5.2	5.7	5.3	5.0	4.5	3.9	3.7	3.7	4.7	7.6
Carroll	4.0	6.9	6.6	5.6	4.9	5.5	5.1	5.6	6.6	10.9
Grayson	5.1	7.6	8.0	6.3	4.8	4.6	5.4	5.0	6.6	10.8
Smyth	4.3	6.3	8.0	7.5	5.1	4.6	4.6	5.4	6.1	11.4
Washington	3.6	5.0	6.0	5.4	4.7	4.4	4.1	4.5	4.9	8.5
Wythe	4.3	6.8	6.2	5.3	4.7	4.3	4.0	4.4	5.3	10.6
Bristol	3.2	4.2	5.0	6.2	6.1	5.4	4.7	5.1	5.7	10.0
Galax	3.5	6.0	8.0	6.4	5.5	5.1	6.0	5.6	6.1	9.9
REGION	4.0	6.0	6.6	5.9	5.0	4.7	4.5	4.9	5.6	10.0
VIRGINIA	2.3	3.2	4.2	4.1	3.7	3.5	3.0	3.0	3.9	6.7
U.S.	4.0	4.7	5.8	6.0	5.5	5.1	4.6	4.6	5.8	9.3



# POVERTY STATUS

Source: U.S. Census Bureau, American Community Survey (ACS) 2006-2008

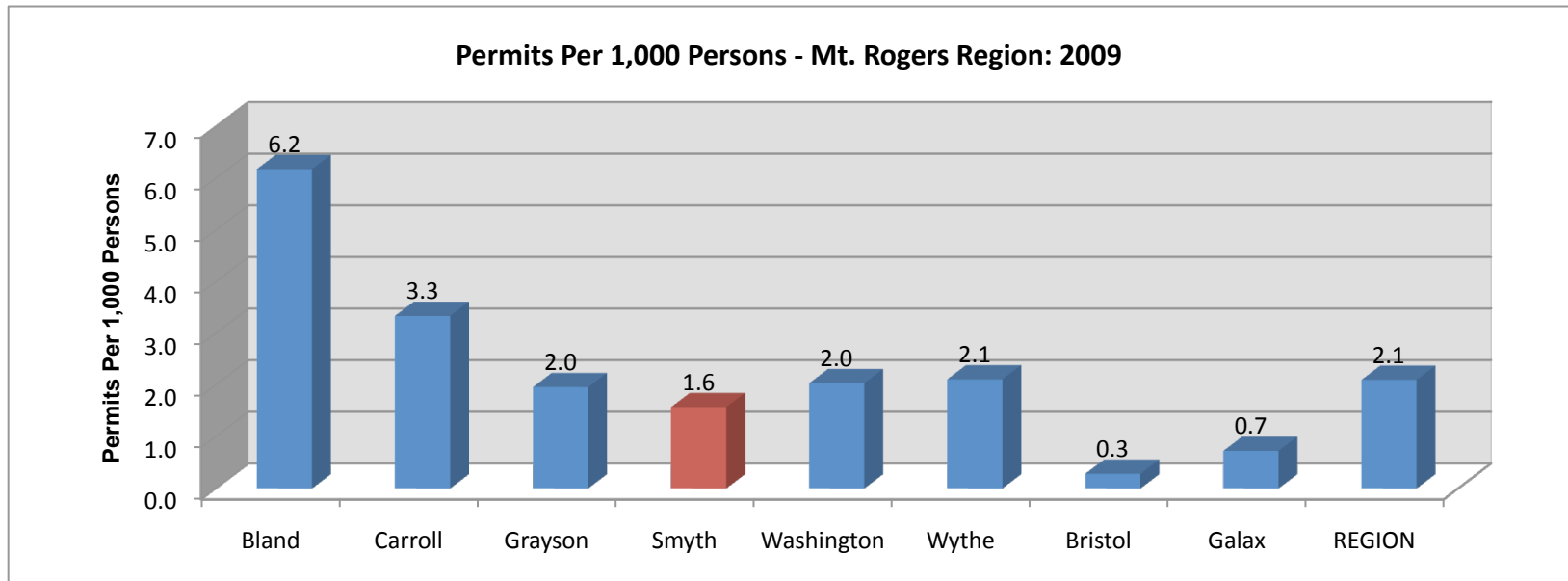
% of Total Population Below Poverty Level	Smyth County	Virginia	United States
Individuals	18.8	9.9	13.2
Families	13.3	7.0	9.6
Families with Related Children Under 18	26.1	10.8	14.9
Female Headed Household with Children < 18	45.9	29.1	36.5



# SINGLE-FAMILY BUILDING PERMITS 2000-2009

Source: Weldon-Cooper Center for Public Service, UVA

Locality	2000	2001	2002	2003	2004	2005	2006	2007	2008	2009	% Change 08-09	Permits Per 1,000 Persons in 2009
Bland	54	47	41	27	24	15	16	29	44	42	-5%	6.2
Carroll	136	139	151	166	157	172	138	135	82	97	18%	3.3
Grayson	90	126	137	77	58	58	102	96	49	31	-37%	2.0
Smyth	65	66	49	49	68	49	46	65	43	50	16%	1.6
Washington	285	230	238	221	418	257	236	180	147	108	-27%	2.0
Wythe	102	73	55	59	66	82	100	96	109	61	-44%	2.1
Bristol	31	32	86	22	23	30	18	28	6	5	-17%	0.3
Galax	13	8	7	11	13	20	14	11	10	5	-50%	0.7
REGION	776	721	764	632	827	683	353	640	490	399	-19%	2.1



# TAXABLE RETAIL SALES

Source: Virginia Department of Taxation

Taxable Retail Sales in Millions (\$000)											
Locality	2002	2003	2004	2005*	2006*	2007	2008	2009	% Change 2002-09	% Change 2008-09	2009 Sales Per Capita
Bland	12.5	12.4	13.3	16.5	16.3	16.3	17.1	15.5	24.0%	-9.4%	\$2,282
Carroll	111.8	116.1	120.1	110.6	127.3	137.4	138.1	132.9	18.9%	-3.8%	\$4,577
Grayson	42.6	31.9	34.1	30.7	33.4	34	36.1	35.3	-17.1%	-2.2%	\$2,235
Smyth	170.8	169.1	173.6	157.9	184.3	190.5	191.6	187.6	9.8%	-2.1%	\$5,911
Washington	444.5	460	491.5	453.2	522.6	556.4	609.4	601.6	35.3%	-1.3%	\$11,347
Wythe	279.7	302.3	312.2	306.5	338.1	350.3	343.7	315.7	12.9%	-8.1%	\$10,936
Bristol	300.8	312.9	321.5	286.1	327.3	362.5	356.6	339.8	13.0%	-4.7%	\$19,209
Galax	161.3	165.7	173.7	157.3	180.4	189.4	194.3	181.5	12.5%	-6.6%	\$26,381
REGION	1,524.00	1,570.40	1,640.00	1,518.80	1,729.70	1,837.00	1,886.90	1,809.90	18.8%	-4.1%	\$9,535

\* These figures are not comparable with other years due to changes in reporting procedures that resulted in undercounting in 2005 and some overcounting in 2006

